

Local Overview

London

April 2019



**INTELLIGENT
LONDON**

Purpose of this dashboard

This dashboard draws together a range of performance indicators into a concise, graphical report. It compares London performance and England, and shows trends over time. It can be used to:

- identify relative strengths and weaknesses in performance
- plan and commission services
- inform self-evaluation and set targets
- demonstrate impact and effectiveness

Contents

- 3 How to interpret the analysis**
- 4 Local Landscape**
- 5 Pupil characteristics and behaviour**
- 6 Secondary and post-16 attainment**
- 7 Pupil destinations**
- 8 Travel and participation**
- 9 Notes**

Latest updates

Updated: Absence - three term 2017/18

Updated: Level 2 and 3 by age 19 - 2017/18

Updated: Participation - March 2018

How to interpret the analysis

Each indicator on the dashboard has:

- a trend line to show London's change over time for up to four years (subject to availability of the data)
- a rank of London against the other 8 regions.

Performance indicators

Performance indicators are those that allow the measurement of "better" or "worse" performance. Note that for some performance indicators better performance means a higher percentage (e.g. achievement of attainment thresholds), while in other cases lower means better (e.g. absence rates).

Trend lines show the best year's performance with a green dot and the worst year's performance with a red dot

The best performing region has a rank of 1st and the lowest nationally is ranked 9th

London					England							
	2015	2016	2017	2018	Trend	2015	2016	2017	2018	London vs England		
										Rank	Latest Diff.	Trend
Measure	45.9%	44.7%	49.4%	46.2%		48.0%	43.7%	43.2%	45.0%	3rd	-2%	

Latest year of data is on the right of the line

The bar is green where London performs better than national average, and red when worse. If the gap is greater than 5% an arrow is shown on the end of the bar

A 4 year trend of how London compares to national. The latest year of data is on the right.

Volume & incidence indicators

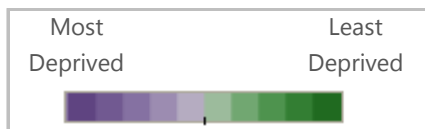
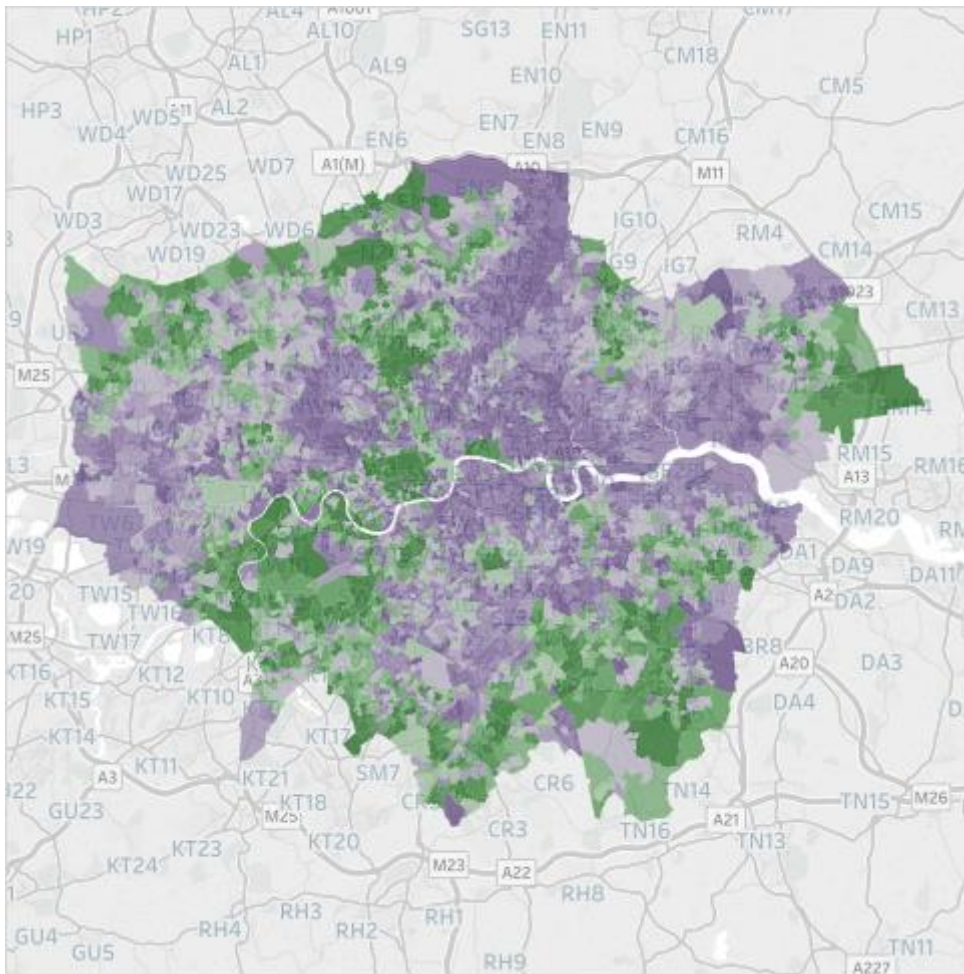
Volume & incidence indicators have no "better" or "worse" performance, just more or less of something.

London					England							
	2015	2016	2017	2018	Trend	2015	2016	2017	2018	London vs England		
										Rank	Latest Diff.	Trend
Measure	47.3%	45.4%	43.9%	-		48.2%	42.8%	40.9%	-	5th	+2.9%	

The latest year of published data is highlighted in grey

The bar is purple where London has higher incidence than national average, and orange when lower. If the gap is greater than 5% an arrow is shown on the end of the bar

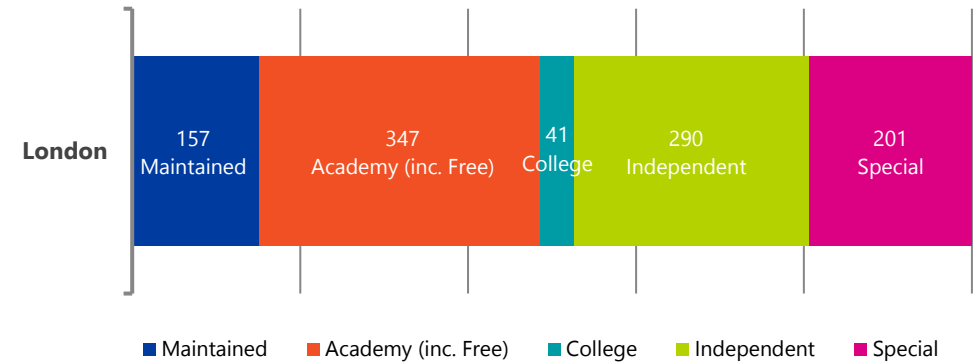
Income Deprivation Affecting Children (IDACI) Map



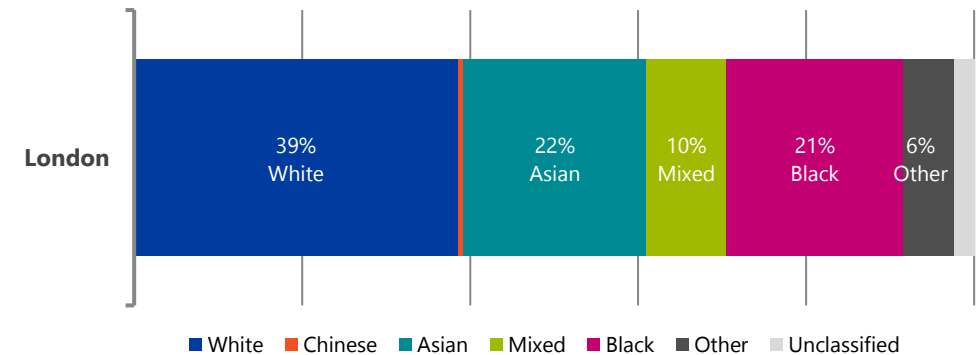
Deprivation ranks are based on the Income Deprivation Affecting Children Index (IDACI). This ranks each LSOA (an area of about 1000 households) in order of the 32,844 LSOAs nationally. LSOAs are grouped into 10 coloured bands, where the darkest purple is an LSOA in the 10% most deprived nationally, and darkest green is in the 10% least deprived nationally.

Breakdown Analysis

Composition of Secondary and Post-16 Provision



Ethnicity



		London					England							
		2015	2016	2017	2018	Trend	2015	2016	2017	2018	London vs England			
											Rank	Latest Diff.	Trend	
												-5% 0% +5%		
LA Info	Secondary state-funded pupil roll	483,795	492,353	503,704	513,736									
	Special school state-funded pupil roll	14,091	14,653	15,461	16,373									
Demographics Secondary	Free School Meals eligible % (FSM)	19.6%	18.1%	17.0%	15.9%		13.9%	13.2%	12.9%	12.4%	8th	+3.5%		
	English as additional language % (EAL)	40.6%	41.2%	41.5%	41.4%		15.0%	15.7%	16.2%	16.6%	1st	+24.8%		
	SEN Support %	13.3%	11.7%	10.9%	10.5%		12.4%	11.0%	10.7%	10.6%	5th	-0.1%		
	SEN education, health and care plan % (EHCP)	2.1%	2.0%	2.0%	1.9%		1.8%	1.7%	1.7%	1.6%	1st	+0.3%		
Abs. & Excl. Secondary	Exclusions - Fixed Term (Secondary %)	6.7%	6.9%	7.5%	-		7.5%	8.5%	9.4%	-	2nd	-1.9%		
	Absence - Overall	4.9%	4.9%	5.0%	5.0%		5.3%	5.2%	5.4%	5.5%	1st	-0.5%		
	Absence - Authorised	3.6%	3.5%	3.5%	3.5%		4.0%	3.8%	3.8%	3.9%	1st	-0.4%		
	Absence - Unauthorised	1.3%	1.4%	1.5%	1.5%		1.3%	1.4%	1.5%	1.6%	4th	-0.1%		
	Absence - Persistent Absentees	-	11.7%	11.9%	12.0%		-	13.1%	13.5%	13.9%	1st	-1.9%		

Rank is generally out of 9. This may vary slightly if any relevant regions are suppressed for a particular metric. '-' means data is unavailable. '*' means data is suppressed for data protection reasons.

		London					England							
		2015	2016	2017	2018	Trend	2015	2016	2017	2018	Rank	Latest Diff.	Trend	
KS4	Headline	Attainment 8	-	51.9	48.9	49.4		-	50.1	46.4	46.6	1st	+5.9%	
		Progress 8	-	+0.16	+0.22	+0.23		-	-0.03	-0.03	-0.02	1st	+0.25	
		9-4 English & Maths	63%	66%	68%	68%		60%	63%	64%	64%	1st	+4%	
		9-5 English & Maths	-	-	48%	49%		-	-	43%	43%	1st	+6%	
KS4	EBacc	English Baccalaureate APS	-	-	-	4.4		-	-	-	4.1	1st	+3.6%	
		English Baccalaureate Entries	47%	50%	50%	52%		39%	40%	38%	38%	1st	+14%	
		English Baccalaureate (9-4)	31%	32%	32%	33%		24%	25%	24%	24%	1st	+9%	
		English Baccalaureate (9-5)	-	-	29%	23%		-	-	21%	17%	1st	+6%	
Post-16	KS5	APS per Entry - All level 3	-	31.2	32.3	31.9		-	31.4	32.3	31.8	3rd	+0.2%	
		A level	-	30.5	31.4	32.2		-	30.4	31.1	32.1	4th	+0.2%	
		Academic	-	30.6	31.6	32.3		-	30.6	31.3	32.3	5th	0.0%	
		Tech level	-	31.5	32.7	29.3		-	30.8	32.3	28.1	3rd	+4.2%	
		Applied General	-	33.3	34.4	28.6		-	34.7	35.7	28.4	4th	+0.6%	
	AAB at A level, at least 2 are facilitating	13%	15%	16%	15%		12%	14%	14%	14%	1st	+1%		
	Three A*-A grades or better at A level	-	10%	12%	12%		-	11%	11%	11%	1st	+1%		
Post-16	By age 19	Qualified to Level 2 by 19 - All Pupils	88%	88%	86%	85%		86%	85%	84%	82%	1st	+3%	
		Qualified to Level 2 inc Eng & Maths by 19 - All Pupils	70%	71%	71%	71%		68%	69%	69%	68%	1st	+3%	
		<i>FSM Eligible</i>	57%	58%	57%	56%		45%	46%	45%	43%	1st	+13%	
		<i>Not FSM Eligible</i>	74%	76%	76%	75%		72%	73%	73%	72%	1st	+3%	
		Qualified to Level 3 by 19 - All Pupils	65%	65%	66%	65%		57%	57%	57%	57%	1st	+8%	
		<i>FSM Eligible</i>	53%	54%	53%	52%		36%	36%	36%	35%	1st	+17%	
		<i>Not FSM Eligible</i>	68%	69%	69%	69%		61%	61%	61%	61%	1st	+8%	

Rank is generally out of 9. This may vary slightly if any relevant regions are suppressed for a particular metric. '-' means data is unavailable. '*' means data is suppressed for data protection reasons.

		London					England							
		2014	2015	2016	2017	Trend	2014	2015	2016	2017	London vs England			
											Rank	Latest Diff.	Trend	
												-5% 0% +5%		
Destinations	KS4 (mainstream)	Overall Education or Employment /Training Destination	-	94%	94%	94%		-	94%	94%	94%	4th	0%	
		Further education college or other FE provider	-	26%	25%	23%		-	38%	38%	34%	9th	-11%	
		School Sixth Form - state funded	-	54%	55%	55%		-	39%	39%	39%	1st	+16%	
		Sixth Form College	-	12%	12%	11%		-	13%	13%	13%	5th	-2%	
		Apprenticeships	-	3%	3%	2%		-	6%	6%	5%	9th	-3%	
		Destination not sustained	-	5%	5%	4%		-	5%	5%	5%	1st	-1%	
		Activity not Captured in Data	-	1%	1%	2%		-	1%	1%	1%	9th	+1%	
	KS5	Overall Education or Employment /Training Destination	-	86%	88%	88%		-	88%	89%	89%	8th	-1%	
		Further education college or other FE provider	-	12%	10%	7%		-	14%	13%	7%	5th	0%	
		Apprenticeships	-	4%	4%	4%		-	7%	7%	6%	9th	-2%	
		UK Higher Education Institution	-	58%	61%	59%		-	48%	51%	50%	1st	+9%	
		Top Third of HEIs	-	22%	25%	21%		-	17%	18%	17%	1st	+4%	
		Russell Group (incl. Ox. and Cam.)	-	13%	14%	14%		-	11%	12%	12%	1st	+2%	
		Other higher education providers	-	35%	35%	38%		-	31%	32%	34%	2nd	+4%	
Sustained Employment and/or Training Destination	-	15%	14%	14%		-	23%	23%	22%	9th	-8%			
Destination not sustained	-	9%	8%	8%		-	9%	8%	8%	4th	0%			
Activity not Captured in Data	-	4%	4%	5%		-	3%	3%	4%	9th	+1%			

Rank is generally out of 9. This may vary slightly if any relevant regions are suppressed for a particular metric. '-' means data is unavailable. '*' means data is suppressed for data protection reasons.

		London					England						
		2015	2016	2017	2018	Trend	2015	2016	2017	2018	London vs England		
											Rank	Latest Diff.	Trend
												-5% 0% +5%	
Travel	Secondary pupils from LA attending school in other LAs	21.4%	21.5%	21.5%	21.6%		9.0%	9.2%	9.4%	9.5%	1st	+12.1%	
	Secondary pupils from other LAs attending school in LA	20.4%	20.5%	20.5%	20.6%		9.1%	9.3%	9.4%	9.5%	1st	+11.1%	
Participation	Apprenticeship starts (Under 19s)	9,990	10,650	9,550	7,400								
	Apprenticeship achievements (Under 19s)	5,490	5,430	5,770	5,450								
	16 and 17 year olds who are NEET or not known activity	-	-	5.3%	5.0%		-	-	6.0%	6.0%	2nd	-1.0%	
	NEET	-	-	1.8%	1.8%		-	-	2.8%	2.7%	1st	-0.9%	
	Not known activity	-	-	3.5%	3.2%		-	-	3.2%	3.3%	6th	-0.1%	
	16 year olds in education and training	96%	96%	96%	96%		94%	95%	95%	95%	1st	+1%	
	<i>Female</i>	96%	96%	97%	97%		95%	95%	96%	96%	1st	+1%	
	<i>Male</i>	95%	95%	96%	96%		94%	94%	94%	94%	1st	+2%	
	17 year olds in education and training	91%	90%	93%	92%		87%	88%	89%	89%	1st	+3%	
	<i>Female</i>	93%	92%	94%	94%		88%	89%	90%	90%	1st	+4%	
<i>Male</i>	90%	89%	91%	91%		86%	87%	88%	88%	1st	+3%		

Rank is generally out of 9. This may vary slightly if any relevant regions are suppressed for a particular metric. '-' means data is unavailable. '**' means data is suppressed for data protection reasons.

Data sources

Below is the list of data sources. Full footnotes and methodologies can be found within the individual sources.

Pupil Characteristics and Behaviour

<https://www.gov.uk/government/collections/statistics-school-and-pupil-numbers>

<https://www.gov.uk/government/collections/statistics-special-educational-needs-sen>

<https://www.gov.uk/government/collections/statistics-exclusions>

<https://www.gov.uk/government/collections/statistics-pupil-absence>

Secondary Phase Attainment

<https://www.gov.uk/government/collections/statistics-gcses-key-stage-4>

<https://www.gov.uk/government/collections/statistics-attainment-at-19-years>

Destinations

<https://www.gov.uk/government/collections/statistics-destinations>

Travel and Participation

<https://www.gov.uk/government/statistical-data-sets/fe-data-library-apprenticeships>

<https://www.gov.uk/government/publications/neet-and-participation-local-authority-figures>

<https://www.gov.uk/government/publications/participation-in-education-and-training-by-local-authority>

Glossary

KS4 - Key Stage 4

KS5 - Key Stage 5

FSM - Free School Meals

LA - Local Authority

APS - Average Point Score

IDACI - Income Deprivation Affecting Children Index

LSOA - Lower Super Output Area. An area with population of approximately 1500 used in Census and other datasets.

NEET - Not in Education, Employment or Training.

Level 2 - Attainment of Level 2 equates to achievement of 5 or more GCSEs at grades A*-C or equivalent qualifications.

Level 3 - Level 3 equates to achievement of 2 or more A-levels or equivalent qualifications.

Including Ox. and Cam. - Including students at the University of Oxford and the University of Cambridge.

Mainstream - Not including Independent schools.

Young People's Education and Skills provides pan-London leadership for 14 to 19 education and training provision in relation to the current and future needs of learners and employers, supports local authorities in undertaking their statutory functions, and assists other stakeholders in planning, policy and provision.



London Councils
59½ Southwark Street
London
SE1 0AL

www.londoncouncils.gov.uk

Mime are experts in communicating complex information with clarity within the education sector. We are passionate about using data to improve the life chances of young people.



Mime
144 Clapham Manor
Street
Clapham
London SW4 6BX

www.mimeconsulting.co.uk
info@mimeconsulting.co.uk
0208 099 4240