

Local Overview

London

January 2019



INTELLIGENT
LONDON

Purpose of this dashboard

This dashboard draws together a range of performance indicators into a concise, graphical report. It compares London performance and England, and shows trends over time. It can be used to:

- identify relative strengths and weaknesses in performance
- plan and commission services
- inform self-evaluation and set targets
- demonstrate impact and effectiveness

Contents

- 3 How to Interpret the Analysis
- 4 Local Landscape
- 5 Pupil Characteristics and Behaviour
- 6 Secondary Phase Attainment
- 7 Destinations
- 8 Travel and Participation
- 9 Notes

Latest updates

Updated: Validated Key Stage 4

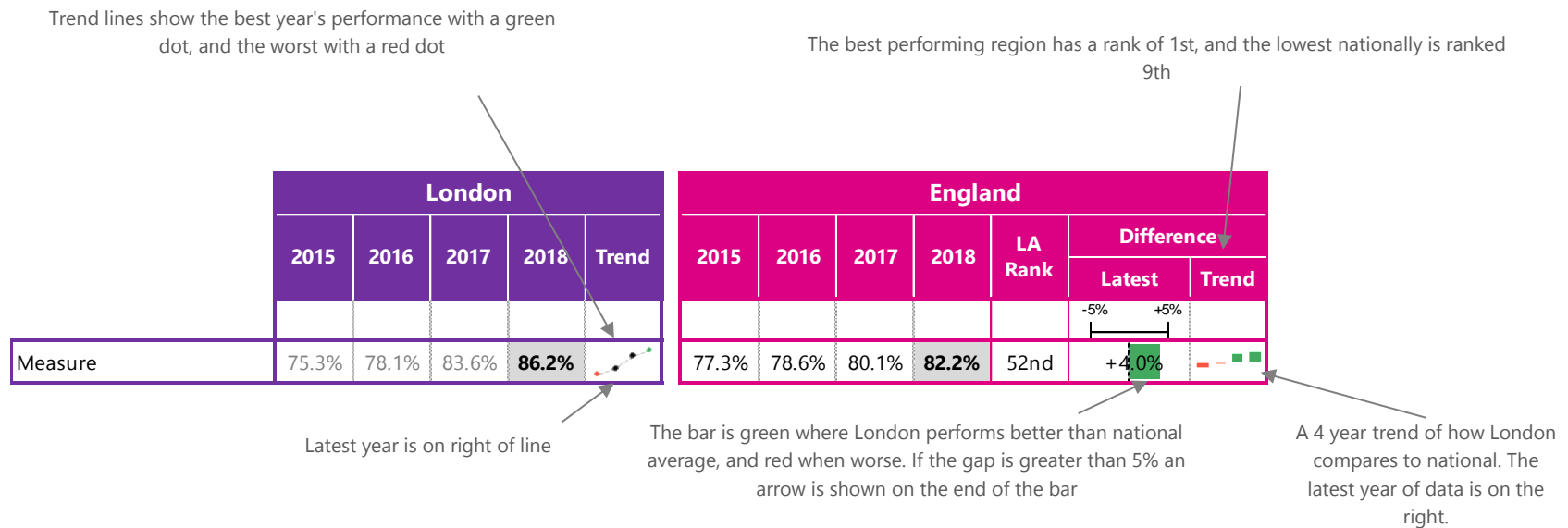
Updated: Validated Key Stage 5

Updated: Apprenticeship starts and achievements

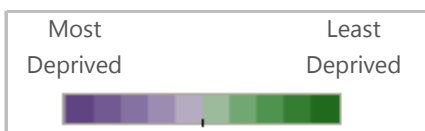
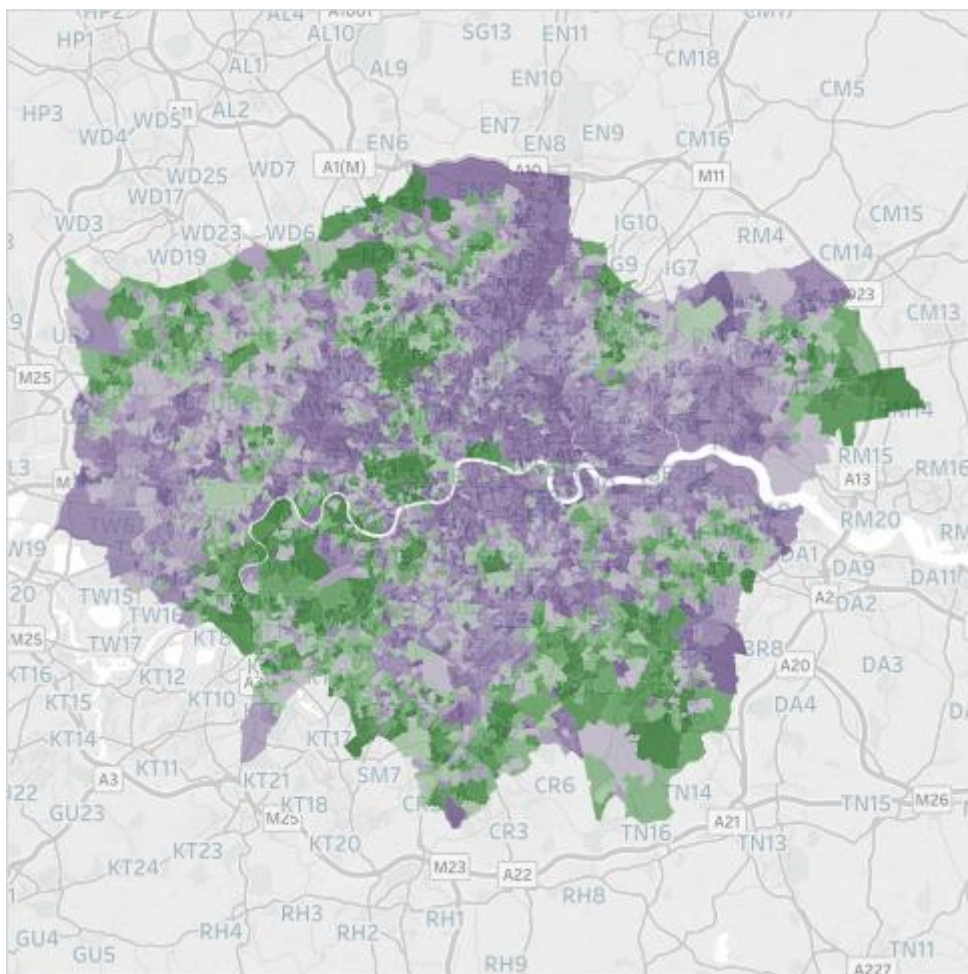
Each indicator on the dashboard has:

- a trend line to show London's change over time for up to four years (subject to availability of the data)
- a rank of London against the other 8 regions.

Note that for some indicators better performance means a higher percentage (e.g. achievement of attainment thresholds), while in other cases lower means better (e.g. absence rates).



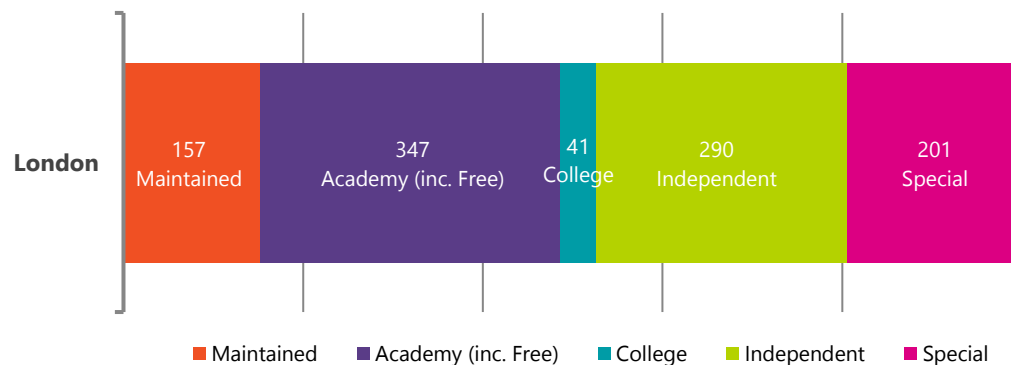
Income Deprivation Affecting Children (IDACI) Map



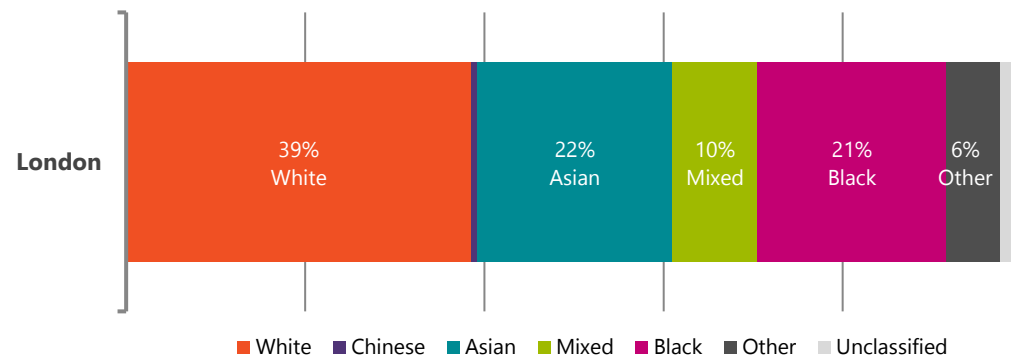
Deprivation ranks are based on the Income Deprivation Affecting Children Index (IDACI). This ranks each LSOA (an area of about 1000 households) in order of the 32,844 LSOAs nationally. LSOAs are grouped into 10 coloured bands, where the darkest purple is an LSOA in the 10% most deprived nationally, and darkest green is in the 10% least deprived nationally.

Breakdown Analysis

Composition of Secondary and Post-16 Provision



Ethnicity



		London					England							
		2015	2016	2017	2018	Trend	2015	2016	2017	2018	LA Rank	Difference		
												Latest	Trend	
												-5%	+5%	
LA info	Secondary state-funded pupil roll	483,795	492,353	503,704	513,736									
	Special school state-funded pupil roll	14,091	14,653	15,461	16,373									
Demographics Secondary	Free School Meals eligible % (FSM)	19.6%	18.1%	17.0%	15.9%		13.9%	13.2%	12.9%	12.4%	8th	+3.4%		
	English as additional language % (EAL)	40.6%	41.2%	41.5%	41.4%		15.0%	15.7%	16.2%	16.6%	1st	+24.9%		
	SEN Support %	13.3%	11.7%	10.9%	10.5%		12.4%	11.0%	10.7%	10.6%	5th	-0.1%		
	SEN education, health and care plan % (EHCP)	2.1%	2.0%	2.0%	1.9%		1.8%	1.7%	1.7%	1.6%	1st	+0.3%		
Abs. & Excl. Secondary	Exclusions - Fixed Term (Secondary %)	6.7%	6.9%	7.5%	-		7.5%	8.5%	9.4%	-	2nd	-1.9%		
	Absence - Overall	4.9%	4.9%	5.0%	-		5.3%	5.2%	5.4%	-	1st	-0.4%		
	Absence - Authorised	3.6%	3.5%	3.5%	-		4.0%	3.8%	3.8%	-	1st	-0.3%		
	Absence - Unauthorised	1.3%	1.4%	1.5%	-		1.3%	1.4%	1.5%	-	4th	0.0%		
	Absence - Persistent Absentees	-	11.7%	11.9%	-		-	13.1%	13.5%	-	1st	-1.6%		

Rank is generally out of 9. This may vary slightly if any relevant regions are suppressed for a particular metric. '-' means either data is unavailable or is suppressed for data protection reasons.

		London					England						
		2015	2016	2017	2018	Trend	2015	2016	2017	2018	LA Rank	Difference	
												Latest	Trend
												-5%	+5%
Key Stage 4 - Validated	Attainment 8	-	51.9	48.9	49.4		-	50.1	46.4	46.6	1st	+5.8%	
	Progress 8	-	+0.16	+0.22	+0.23		-	-0.03	-0.03	-0.02	1st	+0.25	
	English Baccalaureate Average Point Score	-	-	-	4.4		-	-	-	4.1	1st	+9.2%	
	English Baccalaureate Achievements w. 9-4 English & Maths	30.5%	31.9%	32.0%	32.8%		24.4%	24.8%	23.9%	24.2%	1st	+8.6%	
	English Baccalaureate Achievements w. 9-5 English & Maths	-	-	28.8%	23.4%		-	-	21.4%	16.8%	1st	+6.7%	
	English Baccalaureate Entries	47.1%	49.8%	50.0%	52.2%		38.8%	39.8%	38.4%	38.5%	1st	+13.7%	
	9-4 (A*-C) in Eng & Maths	62.5%	66.4%	67.9%	67.9%		59.5%	63.3%	64.2%	64.4%	1st	+5.4%	
9-5 in Eng & Maths	-	-	48.2%	48.7%		-	-	42.9%	43.5%	1st	+5.2%		
Key Stage 5 - Validated	APS per Entry - All level 3	-	31.20	32.25	31.92		-	31.42	32.33	31.84	3rd	+0.3%	
	A level	-	30.46	31.43	32.22		-	30.44	31.13	32.12	4th	+0.3%	
	Academic	-	30.57	31.55	32.30		-	30.63	31.32	32.29	5th	+0.0%	
	Tech level	-	31.52	32.74	29.32		-	30.76	32.25	28.11	3rd	+4.3%	
	Applied General	-	33.31	34.37	28.60		-	34.66	35.69	28.43	4th	+0.6%	
	AAB at A level, at least 2 are facilitating (% of A level Students)	12.6%	14.6%	16.0%	15.0%		11.8%	13.9%	14.3%	13.7%	1st	+1.3%	
Three A*-A grades or better at A level (% of A level students)	-	10.4%	11.6%	11.7%		-	10.5%	11.1%	10.7%	1st	+1.0%		
Level 2 and 3 by Age 19	Level 2 by 19 (Mainstream)	88.2%	87.6%	86.3%	-		86.0%	85.3%	83.6%	-	1st	+2.7%	
	Level 2 inc Eng and Maths by 19 (Mainstream)	70.3%	71.5%	71.5%	-		67.9%	68.6%	68.8%	-	1st	+2.7%	
	<i>FSM Eligible</i>	57.0%	58.2%	56.8%	-		45.2%	45.8%	44.8%	-	1st	+12.0%	
	<i>Not FSM Eligible</i>	74.3%	75.6%	75.5%	-		71.7%	72.6%	72.8%	-	1st	+2.7%	
	Level 3 by 19 (Mainstream)	64.9%	65.4%	65.6%	-		57.4%	57.1%	57.5%	-	1st	+8.1%	
	<i>FSM Eligible</i>	53.4%	53.9%	52.8%	-		36.4%	36.2%	35.9%	-	1st	+16.9%	
	<i>Not FSM Eligible</i>	68.3%	68.9%	69.1%	-		60.9%	60.7%	61.1%	-	1st	+7.9%	

Rank is generally out of 9. This may vary slightly if any relevant regions are suppressed for a particular metric. '-' means either data is unavailable or is suppressed for data protection reasons.

		London					England						
		2013	2014	2015	2016	Trend	2013	2014	2015	2016	LA Rank	Difference	
												Latest	Trend
												-5%	+5%
Key Stage 4 Destination Measures	Overall Education or Employment /Training Destination	93%	94%	94%	94%		92%	94%	94%	94%	4th	0%	—
	Further education college or other FE provider	-	26%	25%	23%		-	38%	38%	34%	9th	-1%	
	School Sixth Form - state funded	54%	54%	55%	55%		39%	39%	39%	39%	1st	+16%	
	Sixth Form College	11%	12%	12%	11%		13%	13%	13%	13%	5th	-2%	
	Apprenticeships	3%	3%	3%	2%		5%	6%	6%	5%	9th	-3%	
	Destination not sustained	4%	5%	5%	4%		5%	5%	5%	5%	1st	-1%	
	Activity not Captured in Data	2%	1%	1%	2%		1%	1%	1%	1%	9th	1%	
Key Stage 5 Destination Measures	Overall Education or Employment /Training Destination	77%	86%	88%	88%		73%	88%	89%	89%	8th	-1%	
	Further education college or other FE provider	-	12%	10%	7%		-	14%	13%	7%	5th	0%	
	Apprenticeships	3%	4%	4%	4%		5%	7%	7%	6%	9th	-2%	
	UK Higher Education Institution	56%	58%	61%	59%		48%	48%	51%	50%	1st	-9%	
	Top Third of HEIs	22%	22%	25%	21%		17%	17%	18%	17%	1st	-4%	
	Russell Group (incl. Ox. and Cam.)	12%	13%	14%	14%		11%	11%	12%	12%	1st	-2%	
	Other higher education institutions or providers	-	35%	35%	38%		-	31%	32%	34%	2nd	-4%	
	Sustained Employment and/or Training Destination	4%	15%	14%	14%		7%	23%	23%	22%	9th	-8%	
	Destination not sustained	7%	9%	8%	8%		9%	9%	8%	8%	4th	0%	
Activity not Captured in Data	15%	4%	4%	5%		15%	3%	3%	4%	9th	1%		

Rank is generally out of 9. This may vary slightly if any relevant regions are suppressed for a particular metric. '-' means either data is unavailable or is suppressed for data protection reasons.

		London					England						
		2015	2016	2017	2018	Trend	2015	2016	2017	2018	LA Rank	Difference	
											Latest	Trend	
											-5%	+5%	
Travel	Secondary pupils living in LA attending schools in other LAs	21.4%	21.5%	21.5%	21.6%		9.0%	9.2%	9.4%	9.5%	1st	+12.1%	
	Secondary pupils living in other LAs attending schools in the LA	20.4%	20.5%	20.5%	20.6%		9.1%	9.3%	9.4%	9.5%	1st	+11.1%	
Participation	Apprenticeship starts (Under 19s)	9990	10650	9550	7400								
	Apprenticeship achievements (Under 19s)	5490	5430	5770	5450								
	16 and 17 year olds who are NEET or not known activity	-	-	5.3%	5.0%		-	-	6.0%	6.0%	2nd	-1.0%	
	<i>NEET</i>	-	-	1.8%	1.8%		-	-	2.8%	2.7%	1st	-0.9%	
	<i>Not known activity</i>	-	-	3.5%	3.2%		-	-	3.2%	3.3%	6th	-0.1%	
	16 year olds in education and training	95.3%	95.7%	96.0%	-		93.1%	94.2%	94.2%	-	1st	+1.8%	
	<i>Female</i>	96.1%	96.4%	96.7%	-		93.8%	94.8%	94.9%	-	1st	+1.8%	
	<i>Male</i>	94.6%	95.0%	95.3%	-		92.4%	93.6%	93.5%	-	1st	+1.8%	
	17 year olds in education and training	90.9%	90.7%	92.5%	-		85.9%	87.9%	88.7%	-	1st	+3.8%	
	<i>Female</i>	92.4%	92.1%	93.8%	-		87.2%	89.1%	89.8%	-	1st	+4.0%	
<i>Male</i>	89.4%	89.3%	91.2%	-		84.7%	86.8%	87.6%	-	1st	+3.6%		

Rank is generally out of 9. This may vary slightly if any relevant regions are suppressed for a particular metric. '-' means either data is unavailable or is suppressed for data protection reasons.

Data sources

Below is the list of data sources. Full footnotes and methodologies can be found within the individual sources.

Pupil Characteristics and Behaviour

<https://www.gov.uk/government/collections/statistics-school-and-pupil-numbers>

<https://www.gov.uk/government/collections/statistics-special-educational-needs-sen>

<https://www.gov.uk/government/statistics/permanent-and-fixed-period-exclusions-in-england-2016-to-2017>

<https://www.gov.uk/government/collections/statistics-pupil-absence>

Secondary Phase Attainment

<https://www.gov.uk/government/collections/statistics-gcses-key-stage-4>

<https://www.gov.uk/government/statistics/a-level-and-other-16-to-18-results-2017-to-2018-provisional>

<https://www.gov.uk/government/collections/statistics-attainment-at-19-years>

Destinations

<https://www.gov.uk/government/collections/statistics-destinations>

Travel and Participation

<https://www.gov.uk/government/statistical-data-sets/fe-data-library-apprenticeships>

<https://www.gov.uk/government/publications/neet-and-participation-local-authority-figures>

<https://www.gov.uk/government/publications/participation-in-education-and-training-by-local-authority>

Glossary

KS4 - Key Stage 4

KS5 - Key Stage 5

FSM - Free School Meals

LA - Local Authority

APS - Average Point Score

IDACI - Income Deprivation Affecting Children Index

LSOA - Lower Super Output Area. An area with population of approximately 1500 used in Census and other datasets.

NEET - Not in Education, Employment or Training.

Level 2 - Attainment of Level 2 equates to achievement of 5 or more GCSEs at grades A*-C or equivalent qualifications.

Level 3 - Level 3 equates to achievement of 2 or more A-levels or equivalent qualifications.

Including Ox. and Cam. - Including students at the University of Oxford and the University of Cambridge.

Mainstream - Not including Independent schools.

Young People's Education and Skills provides pan-London leadership for 14 to 19 education and training provision in relation to the current and future needs of learners and employers, supports local authorities in undertaking their statutory functions, and assists other stakeholders in planning, policy and provision.



London Councils
59½ Southwark Street
London
SE1 0AL

www.londoncouncils.gov.uk

Mime are experts in communicating complex information with clarity within the education sector. We are passionate about using data to improve the life chances of young people.



Mime
144 Clapham Manor
Street
Clapham
London SW4 6BX

www.mimeconsulting.co.uk
info@mimeconsulting.co.uk
0208 099 4240